



Building the future of Japan  
through infrastructure





Our Mission

# Our mission and pride is in protecting people's lives.

Our work is alive everywhere:  
In trains running on railways;  
lights glowing in the city;  
telecommunications exchanged.

Bearing the mission and pride of  
protecting people's lives, we support  
social infrastructure behind the scenes.

There's no need to stand out.  
Yet, we are here, and we will continue  
to support the lives and build the future of this country  
with our own hands.



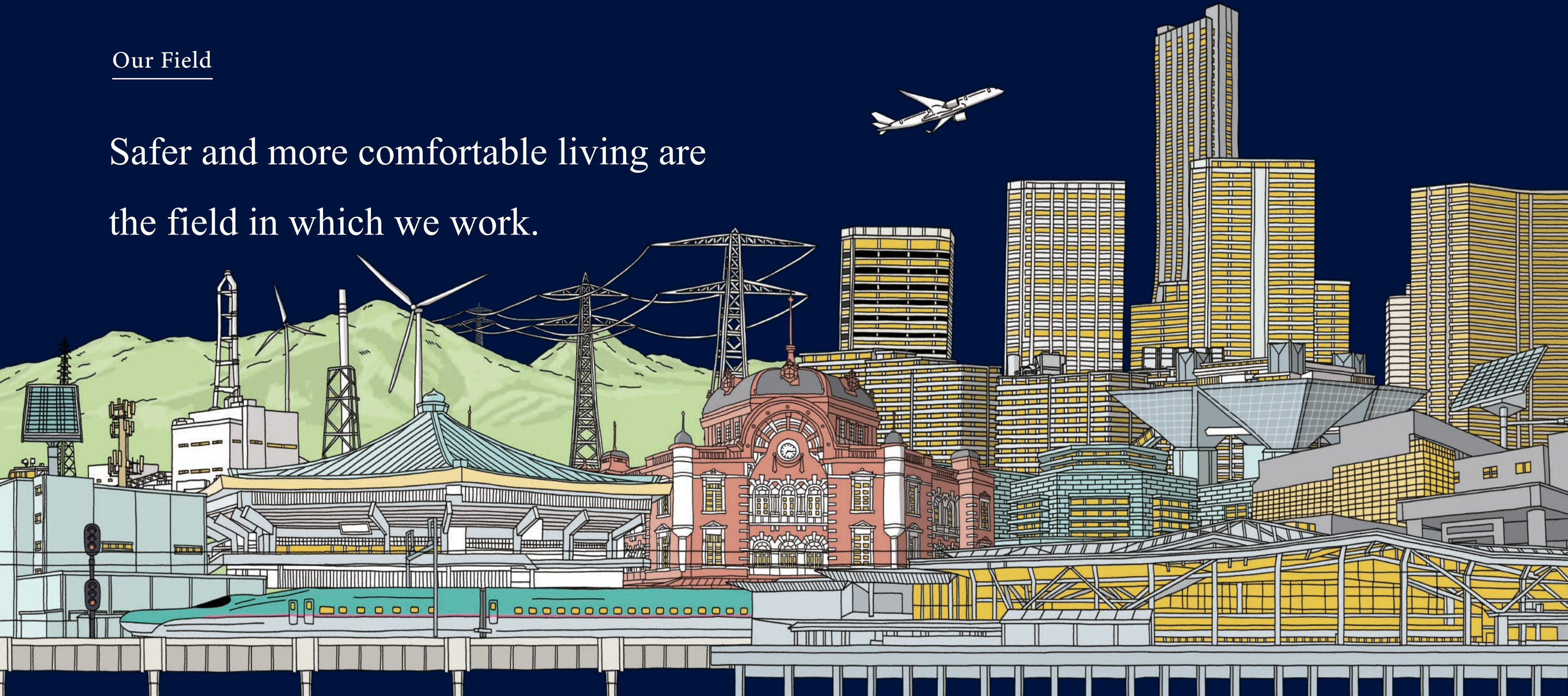
About Us





## Our Field

Safer and more comfortable living are the field in which we work.



We are a total infrastructure construction company with a wide range of expertise that supports social infrastructure.

Starting with railways, where ensuring safe and stable transport is the top priority, we deal with electrical facility construction in the environmental energy field, as well as buildings for stations, office buildings, hospitals, schools, and more, along with telecommunications infrastructure that requires stable operation 24/7.

### Supporting the Railway System

- Electric Train Lines
- Power Generation and Substations
- Transmission Lines
- Electric Light Power
- Signals

### Supporting Information and Communication

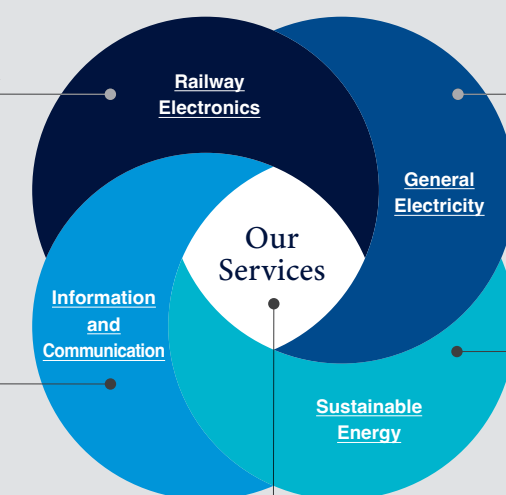
- Mobile Communication
- IP Network
- IC Card System
- Railway Communication

### Supporting Electricity

- Electrical Facilities
- Renewal

### Supporting Energy

- Renewable Energies
- ZEB and Energy-Saving Solutions
- Air Conditioning Equipment, and Plumbing & Sanitary Equipment



Associated Businesses

Technology Development

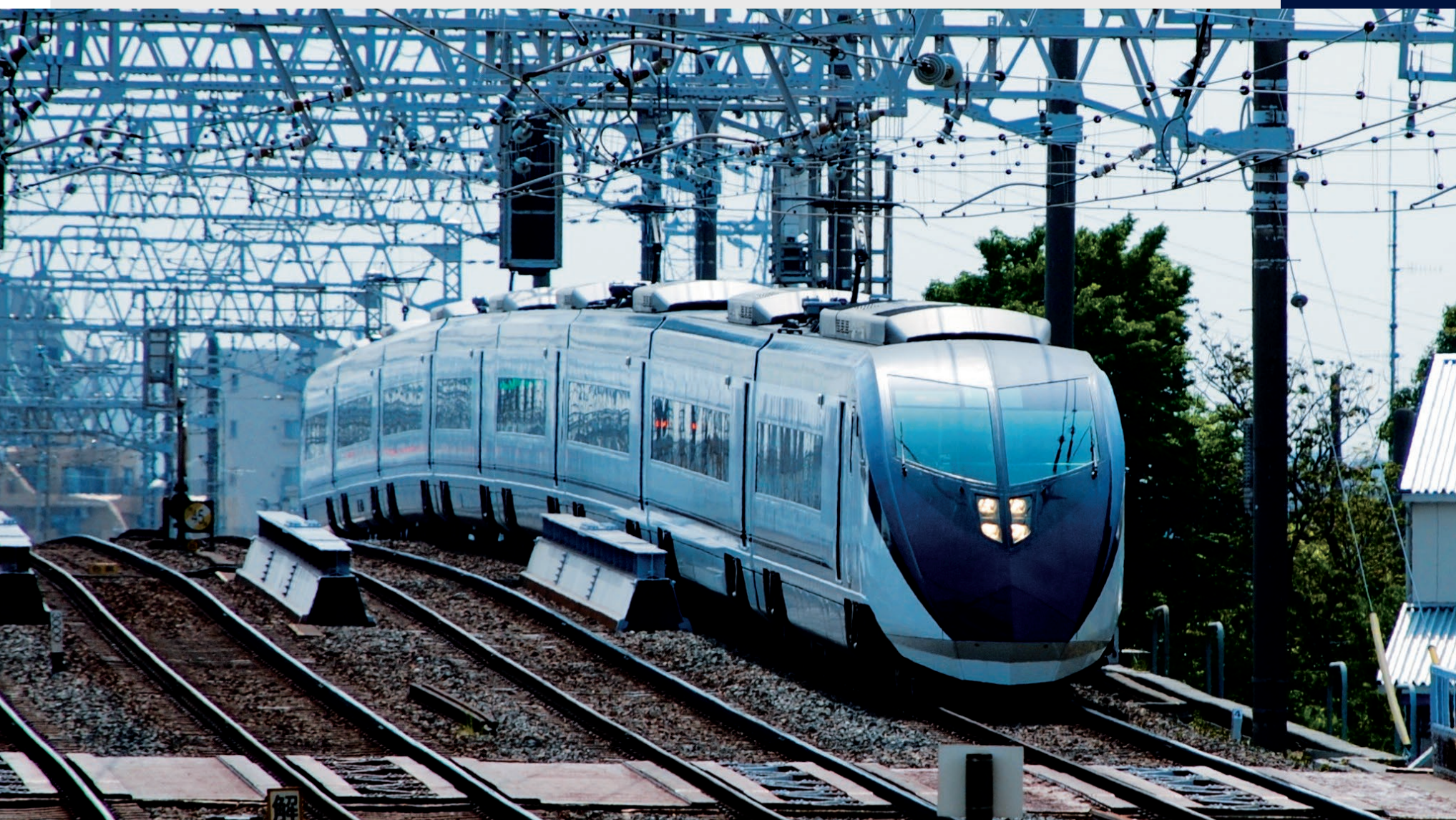
Human Resource Development



Our Services

# Railway Electronics Construction

Railway infrastructure supports the transportation of people and goods. The Railway Electronics Construction Department carries out electrical equipment construction works for all types of railways, including bullet trains, subways, monorails as well as new transportation systems. The five fields of its work are: electric train line construction, including overhead line construction, which provides electricity to trains; power generation and substation construction, which is the foundation of the power network for railway companies; power transmission line construction for transmitting electricity from power plants to substations; electric light power construction, for lighting facilities in station buildings, etc.; and railway signal construction.



## We work in all five fields of railway electronics construction:

- **Electric Train Line Construction**  
Construction of facilities that transmit electricity from substations to trains via pantographs, etc.
- **Power Generation and Substation Construction**  
Construction of power plants and substations as the key facilities for the electrical power network of railway companies
- **Transmission Line Construction**  
Construction of transmission lines for transmitting the high-voltage, high-current electricity generated at power plants to substations
- **Electric Light Power Construction**  
Design/construction of lighting facilities in station buildings and electrical rooms, as well as snow-melting equipment, etc.
- **Signal Construction**  
From the replacing of old equipment to the new construction of signal equipment using the latest electronic/transmission technologies

Please see here for our past achievements.





Our Services

# General Electronics Construction

Electric facilities, including lighting equipment necessary for comfortable living and business activities. The General Electronics Construction Department carries out installation works on electrical equipment in a broad range of buildings, including government buildings, hospitals, station buildings, airports and road facilities. We provide construction services ranging from new construction to renovation and maintenance, responding to the changing needs of our customers in terms of the environment and other factors, and delivering value-added structures through energy and resource-saving as well as safety and security.

**Conducting a wide range of construction works using the high-level technical expertise developed over many years.**

— **Construction of Electrical Facilities**

We deliver comfortable environments for our customers, designing and installing electrical equipment in all types of buildings across the country.

— **Renewal Construction**

We improve the functionality of existing electrical equipment and revitalize them, providing safety and greater comfort in buildings.



Please see here for our past achievements.





Our Services

# Construction of Information and Communication Systems

Communication infrastructure is indispensable in the modern age. The Information and Communication Systems Construction Department handles the construction of a broad range of social communication infrastructure, including mobile communication-related fields, such as mobile phone base station construction for telecommunications carriers, infrastructure-sharing projects, etc., network infrastructure building-related fields, including network system construction for local governments, hospitals, and universities, IC card system construction, as well as railway communication fields, such as surveillance cameras and train radio construction.

## We cover all domains related to telecommunications nationwide.

— **Mobile Communication-Related Construction**

We carry out construction of mobile phone base stations, construction to improve poor mobile phone reception, infrastructure-sharing projects, etc.

— **Construction of IP Network-Related Equipment**

We provide a full range of services, from the proposal and designing of network systems to construction, monitoring and maintenance.

— **IC Card System Building-Related Construction**

We build data centers for IC card systems such as Suica, and network infrastructure for railway station buildings.

— **Construction of Railway Communication Systems**

We construct railway communication infrastructure, including surveillance cameras, train radios and telephone switching equipment, necessary for the safe operation of trains.



Please see here for our past achievements.







Our Services

# Construction for Sustainable Energy

As a response to climate change, reducing environmental impact has become a critical issue in recent years. Under these circumstances, we are putting together our extensive achievements and advanced technological expertise in the fields of renewable energy, ZEB/energy-saving, air conditioning equipment, and plumbing and sanitary equipment, proposing comfortable and better spaces, and working on a variety of sustainable energy construction projects. In addition, we are promoting energy-saving and reducing CO2 emissions through various construction projects, thereby contributing to the realization of a de-carbonized society.

## We carry out various eco-friendly construction projects.

- **Renewable Energy Construction Work**  
We actively develop facility construction projects to promote and expand the use of renewable energy.
- **ZEB/Construction Projects for Energy-Saving**  
As a ZEB planner, we provide energy-saving solutions making the most of our know-how.
- **Air Conditioning and Plumbing Equipment Construction Work**  
We propose optimal air conditioning and plumbing equipment, as well as carrying out various equipment construction projects.

Please see here for our past achievements.





Our Services

# Related Businesses

Other related business departments include a comprehensive building maintenance and management business, a nationwide rental buildings/apartment business, and a real estate business for the regeneration and effective utilization of land and buildings owned by the company. In the rental buildings/apartment business, we plan to continue actively building rental properties. In addition to the major construction business, which provides a one-stop service ranging from site surveys to construction projects, we are actively developing new businesses aimed at creating new value, as well as promoting sales and leasing of NDK brand products.

— Comprehensive Building Maintenance and Management Business

We provide services for the maintenance and management of electrical, air conditioning and sanitation equipment in buildings, as well as cleaning/air quality measurement.

— Real Estate Business

We develop rental building/apartment businesses nationwide, as well as developing and revitalizing land and buildings, real estate brokerage, and sales.

— Major Construction Business

We provide a one-stop service for new construction of company buildings, ranging from site surveys to land acquisition and construction work itself.

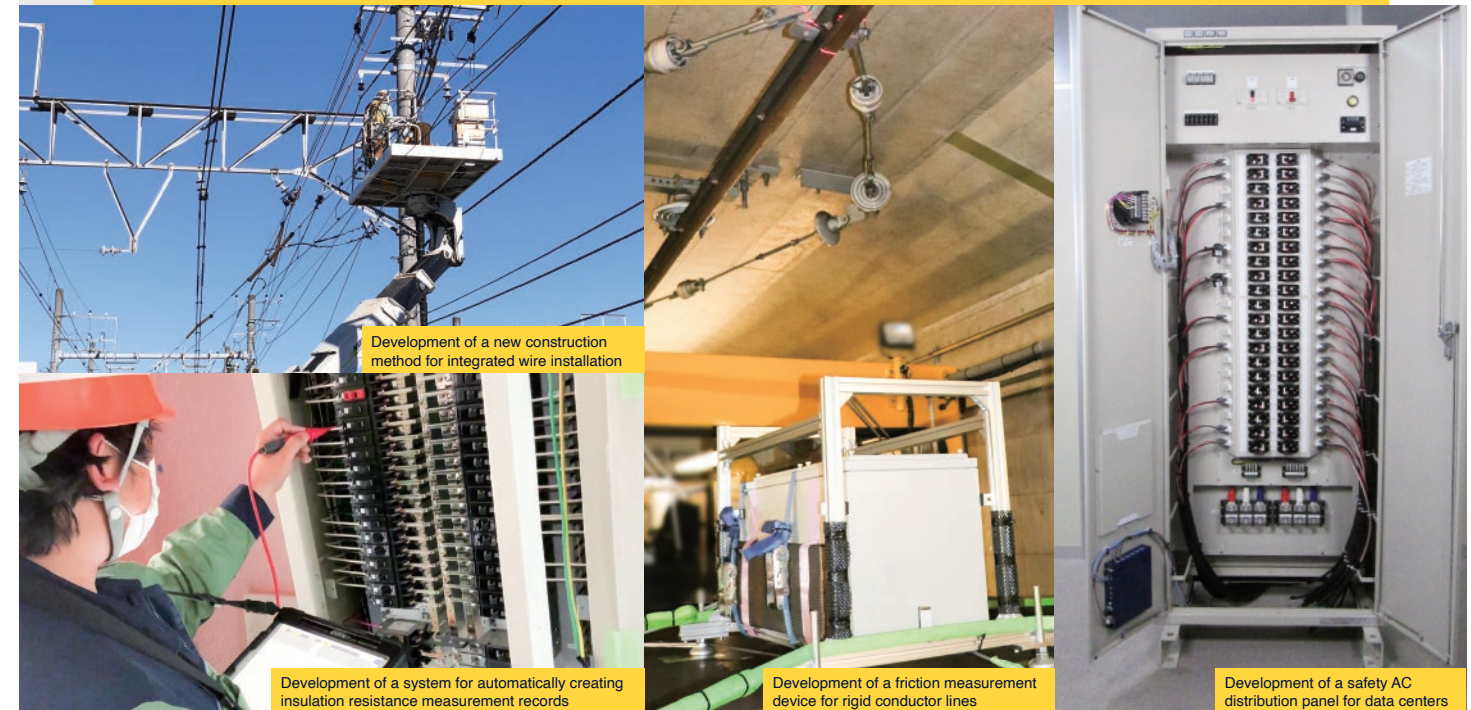
— Sales/Leasing Business

We operate sales of safety equipment, etc. as NDK brand products, as well as insurance, and a leasing business for vehicles, etc.



JR Shinjuku Miraina Tower/Shinjuku Expressway Bus Terminal (electrical safety work)

— Results of Technology Development



Development of a new construction method for integrated wire installation

Development of a system for automatically creating insulation resistance measurement records

Development of a friction measurement device for rigid conductor lines

Development of a safety AC distribution panel for data centers

# Technology Development

Not only do we aim to improve safety, but we also focus on delivering the best possible service to our customers, including improved construction quality and efficiency, as well as consideration for the surrounding environment, while also actively developing technology to reform working practices and solve future labor shortages. Besides promoting the development of these conventional technologies, we are making use of open innovation, including joint development and collaboration with start-ups, by formulating a “Future Strategy for Construction Technology” to achieve systematic technological innovation in construction.



# Human Resource Development (Chuo Gakuen)

We are focusing on fostering professionals in the field of electrical and communications equipment installation with high levels of technical expertise and extensive knowledge, so as to ensure the safety of our customers and construction workers and provide high-quality construction. By providing various training courses at our own training facility, Chuo Gakuen, we strive to meet the needs of our customers in a rapidly changing society and increasingly sophisticated and complex world.



## — Skills Honed in Environments as Close to Actual Sites as Possible

Reproduced platforms, railway crossings, steel towers, etc. on a vast site. We carry out thorough, practical training in an environment as close to the actual workplace as possible. In addition, we operate NDK Gijutsu Gakuen, a vocational training school aimed at improving the technical skills of construction workers.

## — Step-by-step Acquisition of Skills and Techniques

We carry out training and education designed to promote step-by-step growth, including training for new employees. Technical trainees learn the foundation of their skills and techniques during a 6-month to 1-year training period, followed by more practical skills and techniques in their second year and beyond, tailored to the construction departments to which they are assigned.

## — Efforts for the Future of the Railway Industry

As well as improving the technical skills of employees, we are also proposing a curriculum of skills and techniques to support the succession of skills of railway company employees. In addition to training at Chuo Gakuen, we provide employee training by dispatching staff to railway operators.

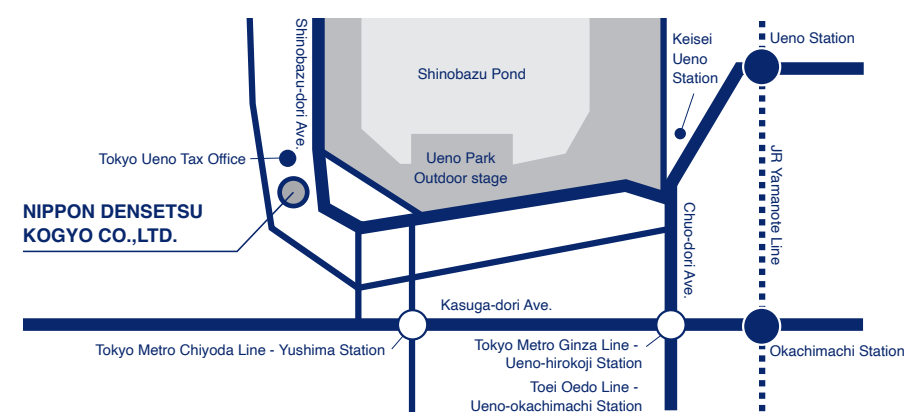




# Company Profile

Trade name	NIPPON DENSETSU KOGYO CO.,LTD.
President & CEO	Kazushige Yasuda
Location of Head Office	110-8706 NDK Dai-Ni Ikenohata Bldg., 1-2-23 Ikenohata, Taito-ku, Tokyo
Date of establishment	December 15th, 1942
Listed securities exchange	Tokyo Stock Exchange Prime Market (securities code: 1950)
Capital stock	8,494,290,000 yen
No. of employees	2,546 (as of March 31st, 2024)
Construction industry licenses	Minister of Land, Infrastructure and Transport License (Special-1) No. 2995 (Special Construction Industry) Electrical construction / telecommunications construction / pipe construction / public works / fire-fighting facilities construction / steel structure construction / construction worker and laborer business / coating work / demolition work
Electrical construction industry reports	Ministry of International Trade and Industry report No. 46115
Telecommunications business registration	Registration no. Kan-No.112
First-class licensed and registered architect office registration	Governor of Tokyo registration No. 60874
Main banks used	Mizuho Bank MUFG Bank Sumitomo Mitsui Banking Corporation Resona Bank Mizuho Trust & Banking

## Access

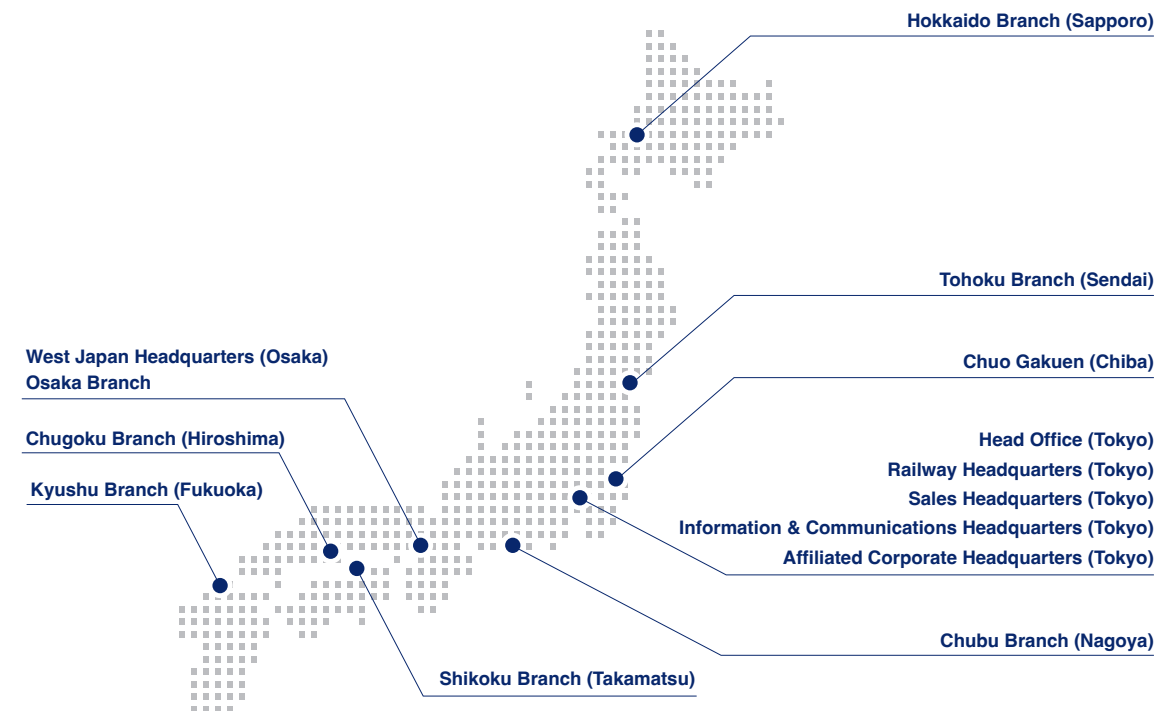


# History

1942	Tetsudo Denki Kogyo Co., Ltd. established
1949	Company name changed to NIPPON DENSETSU KOGYO CO., LTD.
1949	Registered by Minister of Construction in accordance with Construction Business Act
1962	Listed on Tokyo Stock Exchange 2nd Section
1968	Chuo Training Institute opened as project commemorating 25 years since founding
1973	Switched to Tokyo Stock Exchange 1st Section
1974	Minister of Construction License (Special/General-48) No. 2995 obtained following amendment of Construction Business Act
1985	Head Office moved to current location in Ikenohata, Taito-ku
1993	Chuo Gakuen opened as project commemorating 50 years since founding
1997	Organizational reshuffle Railway Headquarters/Sales Headquarters established
1997	ISO 9001 certification obtained
1999	Information & Communications Headquarters established
2001	Densetsuko Gijutsu Gakuen (Vocational Education & Training School) opened
2002	Affiliated Corporate Headquarters established
2006	West Japan Headquarters established
2011	Name changed to NDK Gijutsu Gakuen (Vocational Education & Training School) as project commemorating 70 years since founding
2016	Became company with auditing committee governance
2022	Moved to Prime Market of Tokyo Stock Exchange



# List of Business Locations



<b>Head Office</b>	NDK Dai-Ni Ikenohata Bldg., 1-2-23 Ikenohata, Taito-ku, Tokyo 110-8706
<b>Chuo Gakuen</b>	963 Kaneyama, Kashiwa-shi, Chiba-ken 270-1455
<b>Railway Headquarters</b>	<p><b>Railway Headquarters</b>  <b>Kanto Branch</b>  <b>Train Line Branch Office</b>  <b>Power Generation &amp; Transformation Branch Office</b>  <b>Power Line Branch Office</b>  <b>Electric Power Branch Office</b>  <b>Signal Branch Office No. 1</b>  <b>Signal Branch Office No. 2</b>  <b>Communications Branch Office</b>  <b>Integrated Branch Office</b>  <b>Hachioji Branch Office</b>  <b>Yokohama Branch Office</b>  <b>Omiya Branch Office</b>  <b>Chiba Branch Office</b>  <b>Mito Branch Office</b>  <b>Takasaki Branch Office</b>  <b>Niigata Branch Office</b>  <b>Nagano Branch Office</b></p> <p>NDK Dai-San Ikenohata Bldg., 1-2-11 Ikenohata, Taito-ku, Tokyo 110-8557                  2F NDK Dai-Ichi Tamagawa Bldg., 4-28-6 Nishirokugo, Ota-ku, Tokyo 144-0056                  5F NDK Dai-Ichi Tamagawa Bldg., 4-28-6 Nishirokugo, Ota-ku, Tokyo 144-0056                  3F NDK Dai-Ichi Oji Bldg., 1-29-4 Horifune, Kita-ku, Tokyo 114-0004                  4F NDK Dai-Ichi Tamagawa Bldg., 4-28-6 Nishirokugo, Ota-ku, Tokyo 144-0056                  4F NDK Dai-Ichi Oji Bldg., 1-29-4 Horifune, Kita-ku, Tokyo 114-0004                  3F NDK Dai-San Oji Bldg., 1-29-13 Horifune, Kita-ku, Tokyo 114-0004                  2F NDK Dai-San Oji Bldg., 1-29-13 Horifune, Kita-ku, Tokyo 114-0004                  4F NDK Dai-San Oji Bldg., 1-29-13 Horifune, Kita-ku, Tokyo 114-0004                  4F NDK Dai-Ichi Tamagawa Bldg., 4-28-6 Nishirokugo, Ota-ku, Tokyo 144-0056                  1-47-1 Koyasumachi, Hachioji-shi, Tokyo 192-0904                  3F NDK Dai-Ichi Tamagawa Bldg., 4-28-6 Nishirokugo, Ota-ku, Tokyo 144-0056                  4F NDK Omiya Bldg., 1-399-5 Yoshinocho, Kita-ku, Saitama-shi, Saitama-ken 331-0811                  2F NDK Chiba Bldg., 6-19-38 Sakuragi, Wakaba-ku, Chiba-shi, Chiba-ken 264-0028                  1-4-17 Shiraume, Mito-shi, Ibaraki-ken 310-0804                  2F NDK Takasaki Bldg., 172-3 Azumacho, Takasaki-shi, Gunma-ken 370-0045                  NDK Niigata Bldg., 5-7-2 Tomei, Higashi-ku, Niigata-shi, Niigata-ken 950-0853                  3-9-10 Nakagoshō, Nagano-shi, Nagano-ken 380-0935</p>

<b>Sales Headquarters</b>	<p><b>Sales Headquarters</b>  <b>Environment &amp; Energy Headquarters</b>  <b>Tokyo Branch</b>  <b>Yamanashi Business Office</b>  <b>Yokohama Branch</b>  <b>Higashi-Kanto Branch</b>  <b>Ibaraki Business Office</b>  <b>Kita-Kanto Branch</b>  <b>Tochigi Business Office</b>  <b>Gunma Business Office</b>  <b>Nagano Business Office</b>  <b>Niigata Business Office</b></p> <p>NDK Dai-San Ikenohata Bldg., 1-2-11 Ikenohata, Taito-ku, Tokyo 110-8557                  3F NDK Dai-San Ikenohata Bldg., 1-2-11 Ikenohata, Taito-ku, Tokyo 110-8557                  4F NDK Dai-San Ikenohata Bldg., 1-2-11 Ikenohata, Taito-ku, Tokyo 110-8557                  1F Dai-Ni Meguro Kaikan, 2-34-8 Marunouchi, Kofu-shi, Yamanashi-ken 400-0031                  2F Dai-Ni Yasuda Bldg., 3-32-13 Tsuruyacho, Kanagawa-ku, Yokohama-shi, Kanagawa-ken 221-0835                  2F NDK Chiba Bldg., 6-19-38 Sakuragi, Wakaba-ku, Chiba-shi, Chiba-ken 264-0028                  1-4-17 Shiraume, Mito-shi, Ibaraki-ken 310-0804                  5F NDK Omiya Bldg., 1-399-5 Yoshinocho, Kita-ku, Saitama-shi, Saitama-ken 331-0811                  1F NDK Utsunomiya Bldg., 531-18 Imaizumicho, Utsunomiya-shi, Tochigi-ken 321-0962                  1F NDK Takasaki Bldg., 172-3 Azumacho, Takasaki-shi, Gunma-ken 370-0045                  3-9-10 Nakagoshō, Nagano-shi, Nagano-ken 380-0935                  3F NDK Bandai Bldg., 1-3-7 Bandai, Chuo-ku, Niigata-shi, Niigata-ken 950-0088</p>
<b>Information &amp; Communications Headquarters</b>	<p><b>Information &amp; Communications Headquarters</b></p> <p>2F NDK Dai-San Ikenohata Bldg., 1-2-11 Ikenohata, Taito-ku, Tokyo 110-8557</p>
<b>Hokkaido branches</b>	<p><b>Hokkaido Branch</b>  <b>Hakodate Business Office</b>  <b>Asahikawa Business Office</b></p> <p>5-2-22 Kita 16-Jonishi, Kita-ku, Sapporo-shi, Hokkaido 001-0016                  1-2-19 Kitamihara, Hakodate-shi, Hokkaido 041-0807                  9-3-35 Kagura 4-Jo, Asahikawa-shi, Hokkaido 070-8004</p>
<b>Tohoku branches</b>	<p><b>Tohoku Branch</b>  <b>Aomori Branch Office</b>  <b>Morioka Branch Office</b>  <b>Akita Branch Office</b>  <b>Sendai Branch Office</b>  <b>Fukushima Branch Office</b>  <b>Yamagata Business Office</b></p> <p>NDK Sendai Bldg., 4-9-23 Chuo, Aoba-ku, Sendai-shi, Miyagi-ken 980-0021                  3-2-8 Nitta, Aomori-shi, Aomori-ken 038-0001                  NDK Morioka Bldg., 2-4-5 Kitaioka, Morioka-shi, Iwate-ken 020-0857                  1-30 Tegatashinsakaemachi, Akita-shi, Akita-ken 010-0865                  4-35 Rokuchonome Higashimachi, Wakabayashi-ku, Sendai-shi, Miyagi-ken 984-0004                  1-3 Seimeicho, Fukushima-shi, Fukushima-ken 960-8062                  3F S-PAL Yamagata, 1-1-1 Kasumicho, Yamagata-shi, Yamagata-ken 990-0039</p>
<b>Chubu branches</b>	<p><b>Chubu Branch</b>  <b>Shizuoka Business Office</b></p> <p>NDK Nagoya Bldg., 2-29 Hojintori, Nakamura-ku, Nagoya-shi, Aichi-ken 453-0041                  45-16 Nakadahoncho, Suruga-ku, Shizuoka-shi, Shizuoka-ken 422-8043</p>
<b>West Japan Headquarters</b>	<p><b>West Japan Headquarters</b>  <b>Osaka Branch</b>  <b>Kanazawa Branch Office</b>  <b>Toyama Business Office</b>  <b>Kyoto Business Office</b>  <b>Kobe Business Office</b>  <b>Chugoku Branch</b>  <b>Tokuyama Business Office</b>  <b>Okayama Business Office</b>  <b>Shikoku Branch</b>  <b>Matsuyama Business Office</b>  <b>Kyushu Branch</b>  <b>North Kyushu Business Office</b>  <b>Central Kyushu Business Office</b>  <b>South Kyushu Business Office</b>  <b>Okinawa Business Office</b></p> <p>NDK Osaka Bldg., 2-1-3 Mikunihonmachi, Yodogawa-ku, Osaka-shi, Osaka-fu 532-0005                  NDK Osaka Bldg., 2-1-3 Mikunihonmachi, Yodogawa-ku, Osaka-shi, Osaka-fu 532-0005                  1-7-30 Kitayasue, Kanazawa-shi, Ishikawa-ken 920-0022                  Lotus Toyama, 1-8 Ushijimacho, Toyama-shi, Toyama-ken 930-0858                  2F Dai-Ichi Kyoto Bldg., 499-2 Zaimokuchō, Shichijo-dori Higashinotoin Higashi-iru, Shimogyo-ku, Kyoto-shi, Kyoto-fu 600-8146                  6F Center Plaza Nishi-Kan, 2-11-1 Sannomiyacho, Chuo-ku, Kobe-shi, Hyogo-ken 650-0021                  1-1-42 Futabanosato, Higashi-ku, Hiroshima-shi, Hiroshima-ken 732-0057                  4-3 Gongencho, Shunan-shi, Yamaguchi-ken 745-0046                  1-1-39 Shimadahonmachi, Kita-ku, Okayama-shi, Okayama-ken 700-0033                  NDK Takamatsu Bldg., 7-17 Honmachi, Takamatsu-shi, Kagawa-ken 760-0032                  3-8-38 Himebara, Matsuyama-shi, Ehime-ken 791-8012                  3F NDK Hakata Bldg., 13-7 Hiemachi, Hakata-ku, Fukuoka-shi, Fukuoka-ken 812-0014                  203 Uchiyama Dai-62 Bldg., 4-18 Nakamachi, Moji-ku, Kitakyushu-shi, Fukuoka-ken 800-0039                  1F SR Bldg., 4-12-12 Saikumachi, Chuo-ku, Kumamoto-shi, Kumamoto-ken 860-0041                  3-10-26 Nishida, Kagoshima-shi, Kagoshima-ken 890-0046                  202 Ichiryu Bldg., 3-8-9 Kanagusuku, Naha-shi, Okinawa-ken 901-0155</p>
<b>Affiliated Corporate Headquarters</b>	<p><b>Affiliated Corporate Headquarters</b></p> <p>7F NDK Dai-Ni Ikenohata Bldg., 1-2-23 Ikenohata, Taito-ku, Tokyo 110-8706</p>